

# BRUSH COLLECTION GUIDELINES

TOWN OF WYTHEVILLE, VIRGINIA

DATES TO REMEMBER

## BRUSH PICKUP DATES FOR 2017

February 21—24  
 April 24—28  
 May 22—26  
 June 26—30  
 July 24—28  
 August 28—September 1  
 September 25—29  
 October 23—27  
 December 26—29

## BRUSH COLLECTION GUIDELINES

- In order to avoid getting a citation, please do not have brush out earlier than 6:00 PM on the Friday before collection week.
- ♦ Do not place brush on water meters or sewer cleanouts.
- ♦ Do not place branches, grass clippings or leaves in the travel lane or block sidewalks.
- ♦ Any brush placed out after the scheduled collection time may not get picked up in a timely manner or may result in a fine/charge.
- ♦ Tree removals by a contractor for a homeowner are to be disposed of by the contractor.
- ♦ Vehicles should not be parked near the brush as this blocks accessing the piles.
- ♦ The Town will not pick up old furniture, lumber, tires, or similar items. Disposal of these items are the responsibility of the owner or tenant.
- ♦ **The brush disposal site is open on Tuesdays and Thursdays from 8 AM to 3 PM. A fee of \$3 per cubic yard must be paid at the Treasurer's Office prior to disposal or the \$5 minimum fee. The receipt must be presented to the attendant on duty. Unless brush permits are sold, there will be no attendant on duty. The site will be open on the first and third Saturday of each month from 8 AM to 1 PM for Town residents to take one pickup load of brush without a fee. Disposal of brush in excess of one pickup load will be charged the \$3 per cubic yard fee and the receipt must be presented to the attendant. During the week of the bi-monthly pickups, the site will be open Monday through Friday from 8 AM to 3 PM.**

Few localities offer this type of free service. Your assistance in following the guidelines will ensure the service continues. Please contact the Director of Public Works at 223-3357 with additional questions.



**SORT LEAVES AND GRASS CLIPPINGS INTO SEPARATE PILES; GRASS CLIPPINGS MUST BE BAGGED OR IN CONTAINERS**



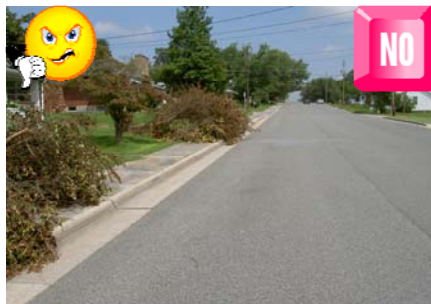
**IN A VERY SMALL PILE, BRANCHES MAY BE IN DIFFERENT DIRECTIONS**



**ARRANGE ALL BRANCHES IN THE SAME DIRECTION PARALLEL TO STREET**



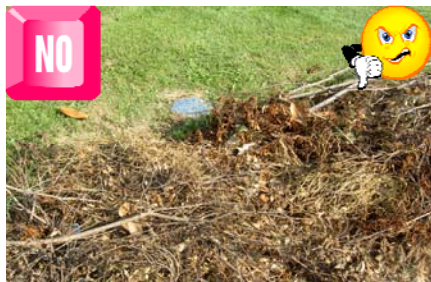
**MORE THAN ONE DUMP TRUCK LOAD (10 FT. X 7 FT. X 4 FT.) PER HOUSEHOLD**



**DO NOT PLACE BRUSH, GRASS CLIPPINGS, OR LEAVES IN THE TRAVEL**



**DO NOT PUT ANY OTHER ITEMS IN THE BRUSH PILE**



**BRUSH SHOULD NOT BE ON WATER METERS OR SEWER CLEANOUTS OR AT FIRE HYDRANTS OR GUIDEWIRES**



**BRANCHES MUST FACE SAME DIRECTION; STACK LOGS SEPARATELY NO LARGER THAN 4 INCHES IN DIAMETER**