

BRUSH/LEAF COLLECTION GUIDELINES FOR 2021

TOWN OF WYTHEVILLE, VIRGINIA

ATTENTION: Brush must be placed on your property; not in alleyways or on neighboring properties.

DATES TO REMEMBER

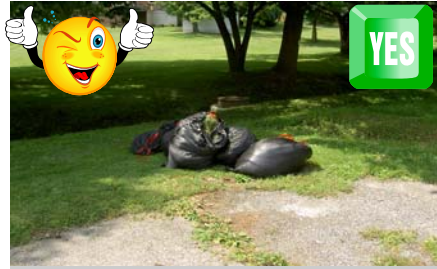
BRUSH PICKUP DATES FOR 2021

January 25 — 29
 February 22 — 26
 March 29 — April 2
 April 26 — 30
 May 24 — 28
 June 28 — July 2
 July 26 — 30
 August 23 — 27
 September 27 — October 1
 October 25 — 29
 November 22 — 26
 December 27 — 31

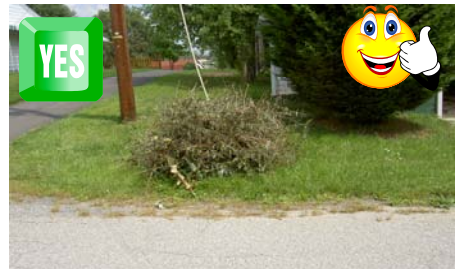
BRUSH/LEAF COLLECTION GUIDELINES

- Leaves will be picked up in the fall as announced.
- In order to avoid getting a citation, please do not have brush out earlier than 6:00 PM on the Friday before collection week.
- Do not place brush/leaves on water meters or sewer cleanouts.
- Do not place branches, grass clippings or leaves in the travel lane or block sidewalks.
- Any brush placed out after the scheduled collection time may not get picked up in a timely manner or may result in a fine/charge.
- Tree and leaf removals by a contractor for a homeowner are to be disposed of by the contractor.
- Vehicles should not be parked near the brush as this blocks accessing the piles.
- The Town does NOT pick up old furniture, lumber, tires, or similar items. Disposal of these items are the responsibility of the owner or tenant.
- **The brush disposal site located at 602 Atkins Mill Road is open on Tuesdays and Thursdays from 8 AM to 3 PM. A fee of \$3 per cubic yard must be paid at the Treasurer's Office prior to disposal or a \$5 minimum fee. The receipt must be presented to the attendant on duty. Unless brush permits are sold, there will not be an attendant on duty.**
- The site will be open on the first and third Saturdays of each month from 8 AM to 1 PM for Town residents to take brush without a fee. There are no restrictions on the number of loads brought to the brush disposal site.
- During the week of the monthly pickups, the site will be open Monday through Friday from 8 AM to 3 PM.

Few localities offer this type of free service. Your assistance in following the guidelines will ensure the service continues. Please contact Chris Peeples, Director of Public Works, at 276-223-3357 with additional questions.



SORT LEAVES AND GRASS CLIPPINGS INTO SEPARATE PILES; GRASS CLIPPINGS MUST BE BAGGED OR IN CONTAINERS



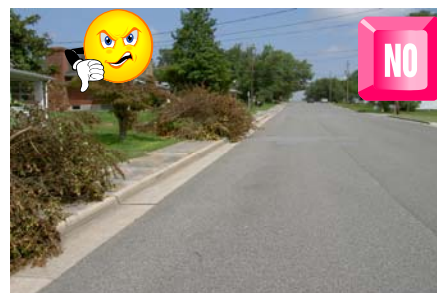
IN A VERY SMALL PILE, BRANCHES MAY BE IN DIFFERENT DIRECTIONS



ARRANGE ALL BRANCHES IN THE SAME DIRECTION PARALLEL TO STREET



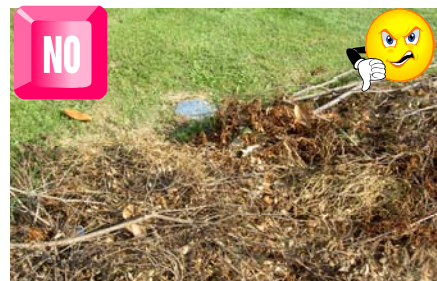
MORE THAN ONE DUMP TRUCK LOAD (10 FT. X 7 FT. X 4 FT.) PER HOUSEHOLD



DO NOT PLACE BRUSH, GRASS CLIPPINGS, OR LEAVES IN THE TRAVEL LANE OR BLOCK SIDEWALKS



DO NOT PUT ANY OTHER ITEMS IN THE BRUSH PILE



BRUSH SHOULD NOT BE ON WATER METERS OR SEWER CLEANOUTS OR AT FIRE HYDRANTS OR GUIDEWIRES



BRANCHES MUST FACE SAME DIRECTION; STACK LOGS SEPARATELY NO LARGER THAN 4 INCHES IN DIAMETER