



Reserve Your License Plates Now

Vice-Mayor Jackie King is excited about the new Wytheville license plates and is encouraging citizens to buy one now. "We are hoping to get the 350 license plates required by DMV to issue the plate," said Jackie King. "You don't need to be a Wytheville resident to purchase the specialized plate. Anyone in Virginia can register for a Wytheville plate."

"The plate displays the hot air balloon on Wytheville's water tank, a landmark that is seen by thousands of people each day," said King. "If you have a Wytheville license plate, most people will know you are from Wytheville or support Wytheville. It is a great way for us to promote our town and our area!"

You can register for the new license plate at the Wytheville Municipal Building, located at 150 East Monroe Street. "Bring your vehicle registration and our staff will help you fill out the form," said Wytheville Treasurer Mike Stephens. A deposit of \$10 is required to reserve a plate. If the required number of registrations is not reached, the Town of Wytheville will refund the deposit. Personalized plates are also available up to 6 characters. The form is available on the town's website at www.wytheville.org.

"We are trying to reach civic clubs, and other organizations to let them know that the registration has started and that we need them to sign up as soon as possible," said Assistant Town Manager Steve Moore. For more information, please contact the Treasurer's Office at 223-3333.

Please Attend!



Memorial Day Ceremony
Sunday, May 29, 2011 - 1:00 p.m.
Wall of Honor, Withers Park



Chautauqua Festival!

June 18-25, 2011
www.WythevilleFestival.org
 for more details

RFTW Returns



During the week before Memorial Day, patriotism isn't just felt in Wytheville, it is seen and heard. "Run For The Wall reminds us that freedom isn't free," said Mayor Trent Crewe. The group's 11th visit will begin around 4:00 p.m. at Withers Park as area residents line 4th Street waving flags and cheering their arrival.

"It is so impressive seeing the long line of motorcycles as they enter Wytheville on 4th Street," said Vice-Mayor Jackie King. "It is such a sight to behold and the sound of all those motorcycles just gives us a special feeling. We know that a great group of people have come back."

The welcome ceremony on Wednesday afternoon is just the beginning of activities that occur during their visit. A special dinner provided by the Wytheville Moose Lodge will be held that evening. Riders stay in local hotels and campgrounds and will be ready early the following morning for the musical presentation by Spiller Elementary School.

"We'd like to encourage as many of our local citizens as possible to come out and help us welcome Run for the Wall on Wednesday afternoon, May 25, and/or Thursday morning, May 26," said Mayor Crewe. "This is one of the finest group of people I have ever met. They truly love their country and love our community."

Mayor Crewe and several other local citizens have met the group in route every year and ridden with them at least a day,

See RFTW Returns, Page 3



June 3 - The Entertainers
July 4 - The Embers
August 5 - The Band of Oz

MAYOR'S MEMO

by Mayor Trenton G. Crewe, Jr.



This is always a busy time for Wytheville Town Council as we endeavor to formulate a reasonable and realistic budget for the following fiscal year. We first ask our department heads to present individual budgets that address what is anticipated to be needed for operation. Our Treasurer compiles this data and also works with departments that generate revenue to estimate what these dollars will be. Then these documents go to our Town Manager who begins to review and see how the two sides of this equation, expenses and revenue, can be balanced. As Council Members, we review this information as well and weigh what we feel are the most pressing needs versus the amount of revenue that will come in through taxes, fees, and any other outside funding. It's a task that takes months of serious consideration.

During this same time, we are monitoring what is transpiring in the General Assembly as bills that are passed can have a direct and far-reaching effect on current and future budgets and how we are able to operate Town services. Increasingly localities are finding that decisions made in Richmond are shifting the cost of previously state-funded initiatives to towns, cities, and counties. We have to be prepared

to absorb these costs as well.

There are a couple of new communication and convenience tools that the Town has recently put in place. Those of you who are social media users may have noticed that the Town of Wytheville has a page on Facebook. Special announcements about Town services and upcoming events can be found there. The Town is also partnering with Official Payments to provide a service making online payments via credit card and e-check possible. Citizens can pay water/sewer payments, taxes, and other fees via this service. A convenience fee is charged by Official Payments. You can learn more or sign up for these new initiatives via links at www.wytheville.org.

We would like to encourage everyone to consider getting a Wytheville License Plate. As you can learn from the story on the front page, we are in the midst of a campaign to get at least 350 license plate paid reservations. This is the magic number that the DMV officials tell us will allow them enough commitment to produce this plate. Our multicolored water tank has become such a landmark for our area, I'm

sure that many of you will want to show your community pride by having one on your vehicle.

There are many unusual and exciting activities going on this summer. We will once again welcome back Run For The Wall in late May for their 11th visit to our town. My current plans include a personal commitment to ride all the way with this wonderful group by joining them in California and riding the entire Southern Route across our great country. It will be an honor to make this journey.

Right after that, we will be hosting a very unusual event as part of the state and national 150th anniversary celebration of the Civil War. On June 4 & 5, a Muster of the Wythe Grays will be held at the Homestead Museum on Tazewell Street. I will have the privilege of "swearing in" this re-created active unit at the Wythe County Courthouse at the conclusion of this event. For more details, see the article on the back page. That same weekend is the first event for the annual After Hours Concert Series in Withers Park and planning is currently underway for some other Downtown Wytheville activities to go along with it. Of course, we will hope for great weather for Chautauqua scheduled for June 18-25.

I welcome the opportunity to talk to you regarding your ideas and concerns. My office, at the Wytheville Municipal Building, is open prior to Council meetings on the second and fourth Monday evenings at 6:30 p.m., and other times by appointment. I can also be reached by phone at 223-3356 or via email at tcrewe@wytheville.org.

2011 Relay For Life

The 2011 Wythe County Relay For Life will be held on May 20 & 21 at Withers Park. The organization is still looking for teams to be part of this year's event. For more information, please call Denise King at 276-620-0188.

Relay for Life is an international campaign of the American Cancer Society. It began in 1985 when Dr. Gordy Klatt, a colorectal surgeon in Tacoma, Washington, ran and walked around a track for 24 hours to raise money for the American Cancer Society. Since then, Relay has grown from a single man's passion to fight cancer into the world's largest movement to end the disease. Each year, more than 3.5 million people in 5,000 communities in the United States, along with additional communities in 20 other countries, gather to take part in this global phenomenon and raise much-needed funds and awareness to save lives from cancer. Thanks to Relay participants, the American Cancer Society continues to save lives. For more information about the American Cancer Society call 1-800-227-2345 or visit www.cancer.org.





Behind the Badge



The Wytheville Police Department is offering a free two-hour class to increase awareness and prevention of criminal confrontations. "Refuse to Be a Victim" classes will be offered on Monday, June 6 at 2:00 p.m. and at 7:00 p.m. at the Wytheville Meeting Center.

This is a personal safety course that teaches strategies that are proactive actions, rather than reactive. Criminals prefer easy targets. Having a personal safety strategy in place will make you more difficult to prey upon and lessen your risk of criminal attack. Wytheville Police Department Captain Rick Arnold will be the instructor. Captain Arnold has completed a national certification to be an instructor for this course and has over 30 years of public safety experience.

The Wytheville Meeting Center is located at 333 Community Boulevard, adjacent to Wytheville Community College. The course is offered free of charge, but, please register by calling 223-3416. This course will also be offered again later in the summer. Look for additional dates in the next edition of this publication.

By the Numbers...

WPD STATS

4th Quarter Traffic Charges (Oct., Nov., Dec. 2010)

		2010 YTD
DUI/DUID, Alcohol Violations	14	73
Speeding Violations	390	988
Safety Belt/Child Safety Violations	63	186
Stop Sign/Traffic Lights/Hwy Signs	52	186
Reckless Driving	12	32
Suspended/Revoked O/L	38	78
All Other Traffic Violations	254	755
Total Traffic Charges This Quarter (YTD)	823	(2,298)

4th Quarter Criminal Charges (Oct., Nov., Dec. 2010)

		2010 YTD
Public Intoxication, Disorderly	64	258
Shoplifting	33	66
Patrol Initiated Drug Arrests	20	106
Felony Firearms Violations	3	9
All Other Criminal Charges by Patrol	40	1,011
Total Criminal Charges by Patrol	160	(1,450)

4th Quarter Traffic & Criminal Charges (Oct., Nov., Dec. 2010)

		2010 YTD
Combined Totals for 2010	983	(3,748)

4th Quarter Accident Reported (Oct., Nov., Dec. 2010)

	Oct	Nov	Dec	2010 YTD
Major	17	9	7	139
Minor	26	39	30	370
Fatal		1		2
Injury	5	4	4	45
Violations	9	5	8	97

RFTW Returns, from Page 1

if not two or more. This year the Mayor plans a little longer trip. "I hope to have the opportunity to accompany Wytheville residents Bob Atwell, the Virginia RFTW Coordinator, Tammy Grubb, the Assistant Virginia Coordinator, and several others to California and ride the entire Southern Route. It will be an honor and a privilege to make this personal journey. I can only imagine all of the wonderful people I will meet and experiences I'll have along the way."

Run For The Wall (RFTW) was started in 1989 by two Vietnam Veterans, James Gregory and Bill Evans. The two trav-

eled across the heartland of America on motorcycles, talking to local media about the thousands of men and women who are still unaccounted for from all wars. The mission of the group is to promote healing among ALL Veterans and their families and friends, to call for an accounting of all Prisoners of War and those Missing in Action (POW/MIA), to honor the memory of those Killed in Action (KIA) from all wars, and to support military personnel all over the world.

Public awareness is only part of their mission. The ride gives all Veterans, especially Vietnam Vets, the opportunity to get

their own welcome home and start their healing process. Everyone who has fought, or has friends or loved ones who have fought in a war, has their own issues from their experience. Many who participate find that whatever they've been missing can be found in the Run For The Wall family. They can finally start settling issues that have been put away for over twenty years.

The trip takes ten days to reach the Vietnam Veterans Memorial where it officially ends on Friday evening before Memorial Day. Many of the group join in the Rolling Thunder Parade in Washington, D.C. on that Sunday.

Civic Monument

Four persons will be recognized this year by being added to the Civic Monument at the Wall of Honor in Withers Park.



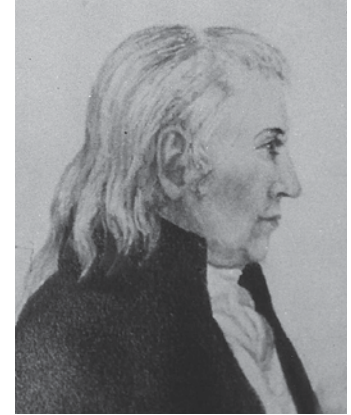
John Bartrum Hurt

John Bartrum Hurt could keep a secret, but that was not nearly as important as the type of secrets he helped to discover. Hurt was born in West Virginia in 1904. His family moved to Wytheville in 1907 where he spent most of his childhood. Assisted by his uncle, U.S. Rep. Joseph Crockett Shaffer, Hurt interviewed in 1930 with the Signal Intelligence Service, a predecessor to the National Security Agency. The agency was looking for someone fluent in Japanese. Hurt had mastered the language without having visited Japan through his association with friends in college who were Japanese. It would be five decades later before top secret information documenting his work would be released and the public would know that he had decoded and translated Japan's most secret and sensitive messages during World War II. Hurt died in 1966 at the age of 62.



James Calvin Lindsey and Rachel Buchanan Lindsey

Answering the call to serve your community can take many forms; but, for one Rural Retreat couple, it became a lifelong endeavor. Born in Wythe County in the early 1920's, James Calvin Lindsey and Rachel Buchanan Lindsey chose careers that involved helping their neighbors at critical times. James Lindsey was a third generation owner/operator of Lindsey Funeral Home and his wife Rachel became a registered nurse. For decades, they answered fire and rescue calls in Rural Retreat from their home without compensation. They provided the first ambulance service and assisted with the organization of the Rural Retreat Volunteer Rescue Squad. The Lindseys served in many church and civic organizations and as the parents of four children were very supportive of school-related activities. James Lindsey served as a member of Rural Retreat Town Council from 1966-1978. When he passed away in 2010, the Lindseys had been married for 60 years.



James McGavock, Sr.

When speaking of notable persons in the history of Wythe County and Southwest Virginia, there were not many before James McGavock, Sr. Born in Northern Ireland in 1728, McGavock immigrated to Virginia about 1754-55. He served in the French and Indian War and settled at Fort Chiswell about 1772. He owned and operated a mill, store, tavern, and trading post there and gave land for the courthouse and prison for the then-new county of Montgomery at Fort Chiswell. McGavock served as a justice on the court and was one of the fifteen signers of the Fincastle County Resolutions. The first session of the Wythe County Court was held at his location in 1790; and, during the Revolutionary War, the fort was an active military post. McGavock died in Max Meadows in 1812 and is buried in the McGavock Cemetery.

Apple Butter Making
Saturday, May 7
 Regional Visitors Center
 975 Tazewell Street
 Come watch!

Call 223-3355 for more details
 (made by Sons of Confederate
 Veterans No. 1758)

**May is Building
 Safety Month**

Focus is on Improving Accessibility
 To learn more, call the
 Town of Wytheville Building Official at 223-3339

BRUSH COLLECTION GUIDELINES

TOWN OF WYTHEVILLE, VIRGINIA



BRUSH PICKUP DATES FOR 2011

- January 24-28
- February 21-25
- March 28-April 1
- April 25-29
- May 23-27
- June 27-July 1
- July 25-29
- August 29-September 2
- September 26-30
- October 24-28
- November 28-December 2
- December 26-30

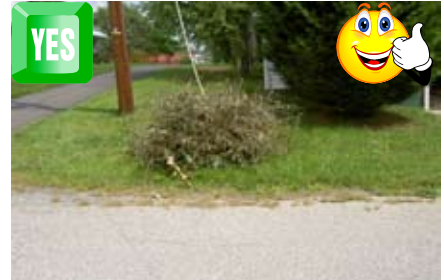
BRUSH COLLECTION GUIDELINES

- In order to avoid getting a citation, please do not have brush out earlier than 6:00 PM on the Friday before collection week.
- ♦ Do not place brush on water meters or sewer cleanouts.
- ♦ Do not place branches, grass clippings or leaves in the travel lane or block sidewalks.
- ♦ Any brush placed out after the scheduled collection time may not get picked up in a timely manner or may result in a fine/charge.
- ♦ Tree removals by a contractor for a homeowner are to be disposed of by the contractor.
- ♦ Vehicles should not be parked near the brush, as this blocks accessing the piles.
- ♦ The Town will not pick up old furniture, lumber, tires, or similar items. Disposal of these items is the responsibility of the owner or tenant.
- ♦ The brush disposal site is open Monday-Friday from 8 AM to 3 PM and the first and third Saturday of each month from 8 AM to 1 PM.

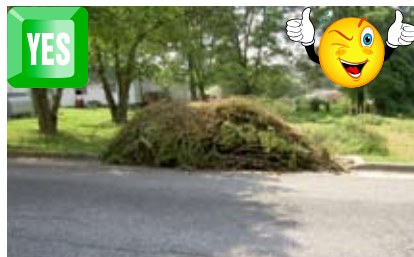
Few localities offer this type of free service. Your assistance in following the guidelines will ensure the service continues and is not abused. Please contact the Director of Public Works at 223-3357 with additional questions.



SORT LEAVES AND GRASS CLIPPINGS INTO SEPARATE PILES; GRASS CLIPPINGS MUST BE BAGGED OR IN CONTAINERS



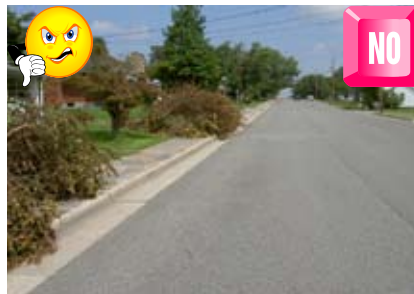
IN A VERY SMALL PILE, BRANCHES MAY BE IN DIFFERENT DIRECTIONS



ARRANGE ALL BRANCHES IN THE SAME DIRECTION PARALLEL TO STREET



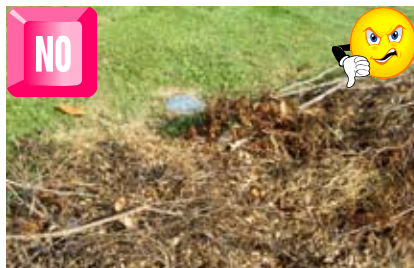
MORE THAN ONE DUMP TRUCK LOAD (10 FT. X 7 FT. X 4 FT.) PER HOUSEHOLD



DO NOT PLACE BRUSH, GRASS CLIPPINGS, OR LEAVES IN **THE TRAVEL LANE OR BLOCK SIDEWALKS**



DO NOT PUT ANY OTHER ITEMS IN THE BRUSH PILE



BRUSH SHOULD NOT BE ON WATER METERS OR SEWER CLEANOUTS OR AT FIRE HYDRANTS OR GUIDEWIRES



BRANCHES MUST FACE SAME DIRECTION, STACK LOGS SEPARATELY NO LARGER THAN 4 INCHES IN DIAMETER

Annual Drinking Water Quality Report Wytheville

INTRODUCTION

This Annual Drinking Water Quality Report for calendar year 2010 is designed to inform you about your drinking water quality. Our goal is to provide you with a safe and dependable supply of drinking water, and we want you to understand the efforts we make to protect your water supply. The quality of your drinking water must meet state and federal requirements administered by the Virginia Department of Health (VDH).

If you have questions about this report, please contact: Tony Hounshell, Water Treatment Plant Superintendent at 276-223-3322.

If you want additional information about any aspect of your drinking water or want to know how to participate in decisions that may affect the quality of your drinking water, please contact: Tony Hounshell, Water Treatment Plant Superintendent at 276-223-3322.

The times and location of regularly scheduled board meetings are as follows: Town Council meetings are held the 2nd and 4th Mondays of each month at 7:00 P.M. at the Town of Wytheville Municipal Office Building.

New River Regional Water Authority meetings are held the 3rd Thursday of each month at 9:30 A.M. at the Town of Wytheville Municipal Office Building.

GENERAL INFORMATION

The sources of drinking water (both tap water and bottled water) include rivers, lakes, streams, ponds, reservoirs, springs, and wells. As water travels over the surface of the land or through the ground, it dissolves naturally-occurring minerals and, in some cases, radioactive material, and can pick up substances resulting from the presence of animals or from human activity. Contaminants that may be present in source water include: (1) Microbial contaminants, such as viruses and bacteria, which may come from sewage treatment plants, septic systems, agricultural livestock operations, and wildlife. (2) Inorganic contaminants, such as salts and metals, which can be naturally-occurring or result from urban stormwater runoff, industrial or domestic wastewater discharges, oil and gas production, mining, or farming. (3)

Pesticides and herbicides, which may come from a variety of sources such as agriculture, urban stormwater runoff, and residential uses. (4) Organic chemical contaminants, including synthetic and volatile organic chemicals, which are byproducts of industrial processes and petroleum production, and can also come from gas stations, urban stormwater runoff, and septic systems. (5) Radioactive contaminants, which can be naturally-occurring or be the result of oil and gas production and mining activities. In order to ensure that tap water is safe to drink, EPA prescribes regulations which limit the amount of certain contaminants in water provided by public water systems. Food and Drug Administration regulations establish limits for contaminants in bottled water which must provide the same protection for public health.

Drinking water, including bottled drinking water, may reasonably be expected to contain at least small amounts of some contaminants. The presence of contaminants does not necessarily indicate that water poses a health risk. More information can be obtained by calling the Environmental Protection Agency's Safe Drinking Water Hotline (800-426-4791).

Some people may be more vulnerable to contaminants in drinking water than the general population. Immuno-compromised persons such as persons with cancer undergoing chemotherapy, persons who have undergone organ transplants, people with HIV/AIDS or other immune system disorders, some elderly, and infants can be particularly at risk from infections. These people should seek advice about drinking water from their health care providers. EPA/CDC guidelines on appropriate means to lessen the risk of infection by cryptosporidium and other microbiological contaminants are available from the Safe Drinking Water Hotline (800-426-4791).

SOURCE OF YOUR DRINKING WATER

The source of your drinking water is surface water from Reed Creek and the New River. Water from the New River is purchased from the New River Regional Water Authority.

The Virginia Department of Health conducted a source water assessment of our system during 2002. Reed Creek was determined to be of high susceptibility to contamination using the criteria developed by the state in its approved Source Water Assessment Program.

The assessment report consists of maps showing the source water assessment area, an inventory of known land use activities of concern, and documentation of any known contamination within the last 5 years. The report is available by contacting Tony Hounshell at the phone number or address given elsewhere in this drinking water quality report.

A New River source water assessment was conducted in 2002 by Olver, Inc. The New River was determined to be of high susceptibility to contamination using the criteria developed by the state in its approved Source Water Assessment Program. The assessment report consists of maps showing the source water assessment area, an inventory of known land use activities of concern, and documentation of any known contamination within the last 5 years. The report is available by contacting the Wythe County Water & Wastewater Department.

DEFINITIONS

Contaminants in your drinking water are routinely monitored according to Federal and State regulations. The table on the next page shows the results of our monitoring for the period of January 1st to December 31st, 2010. In the table and elsewhere in this report you will find many terms and abbreviations you might not be familiar with. The following definitions are provided to help you better understand these terms:

Maximum Contaminant Level, or MCL - the highest level of a contaminant that is allowed in drinking water. MCLs are set as close to the MCLGs as feasible using the best available treatment technology.

Maximum Contaminant Level Goal, or MCLG - the level of a contaminant in drinking water below which there is no known or expected risk to health. MCLGs allow for a margin of safety.

Non-detects (ND) - lab analysis indicates that the contaminant is not present.

Parts per million (ppm) or Milligrams per liter (mg/l) - one part per million corresponds to one minute in two years or a single penny in \$10,000.

Parts per billion (ppb) or Micrograms per liter - one part per billion corresponds to one minute in 2,000 years, or a single penny in \$10,000,000.

Parts per trillion (ppt) or Nanograms per liter (nanograms/l) - one part per trillion corresponds to one minute in 2,000,000 years, or a single penny in \$10,000,000,000.

Picocuries per liter (pCi/L) - picocuries per liter is a measure of the radioactivity in water.

Action Level - the concentration of a contaminant which, if exceeded, triggers treatment or other requirements which a water system must follow.

Treatment Technique (TT) - a required process intended to reduce the level of a contaminant in drinking water.

Nephelometric Turbidity Unit (NTU) - nephelometric turbidity unit is a measure of the clarity, or cloudiness, of water. Turbidity in excess of 5 NTUs is just noticeable to the average person. Turbidity is monitored because it is a good indicator of the effectiveness of our filtration system.

Maximum Residual Disinfectant Level Goal or MRDLG - the level of drinking water disinfectant below which there is no known

or expected risk to health. MRDLGs do not reflect the benefits of the use of disinfectants to control microbial contaminants.

Maximum Residual Disinfectant Level or MRDL - the highest level of a disinfectant allowed in drinking water. There is convincing evidence that addition of a disinfectant is necessary for control of microbial contaminants.

WATER QUALITY RESULTS Regulated Contaminants

Contaminant (units)	MCLG	MCL	Level Detected	Violation (Y/N)	Range	Date of Sample	Typical Source of Contamination
Nitrate (ppm)	10	10	1.96	N	0.28 – 1.96	2010	Runoff from fertilizer use; Leaching from septic tanks, sewage; Erosion of natural deposits
Fluoride (ppm)	4	4	1.14	N	ND – 1.14	2010	Water additive which promotes strong teeth
Barium (ppm)	2	2	0.233	N	0.02 – 0.233	2010	Discharge of drilling waste; Discharge from metal refineries; Erosion of natural deposits
Alpha Emitters(pCi/L)	0	15	1	N	ND – 1	2010	Erosion of Natural Deposits
Combined Radium (pCi/l)	0	5	2.1	N	ND – 2.1	2010	Erosion of Natural Deposits
Chlorine (ppm)	MRDLG = 4	MRDL = 4	1.10	N	0.21 – 1.79	2010	Water additive used to control microbes
Total Organic Carbon	NA	TT, met when ≥ 1	1.00	N	1.00 – 1.60	2010	Naturally present in the environment
Haloacetic Acids (ppb)	NA	60	40	N	15 – 53	2010	By-product of drinking water disinfection
TTHMs [Total Trihalomethanes] (ppb)	NA	80	47	N	13 – 104	2010	By-product of drinking water disinfection
Turbidity (NTU)	NA	TT, 1 NTU Max	0.24	N	0.05 – 0.24	2010	Soil runoff
		TT, ≤ 0.3 NTU 95% of the time	100%	N	NA		

Lead and Copper Contaminants

Contaminant (units)	MCLG	Action Level	90 th Percentile	Date of Sampling	# of Sampling Sites Exceeding Action Level	Typical Source of Contamination
Lead (ppb)	0	AL = 15	3.4	9/1/09	1	Corrosion of household plumbing system; Erosion of natural deposits
Copper (ppm)	1.3	AL = 1.3	0.0314	9/1/09	0	Corrosion of household plumbing systems; Erosion of natural deposits; Leaching from wood preservatives

The water quality results in the above table are from testing done in 2010. However, the state allows us to monitor for some contaminants less than once per year because the concentrations of these contaminants do not change frequently. Some of our data, though accurate, is more than one year old.

MCLs are set at very stringent levels by the U.S. Environmental Protection Agency. In developing the standards, EPA assumes that the average adult drinks 2 liters of water each day throughout a 70-year life span. EPA generally sets MCLs at levels that will result in no adverse health effects for some contaminants or a one-in-ten-thousand to one-in-a-million chance of having the described health effect for other contaminants.

Additional Information for Lead

If present, elevated levels of lead can cause serious health problems, especially for pregnant women and young children. Lead in drinking water is primarily from materials and components associated

with service lines and home plumbing. The Town of Wytheville is responsible for providing high quality drinking water, but cannot control the variety of materials used in plumbing components. When your water has been sitting for several hours, you can minimize the potential for lead exposure by flushing your tap for 15 to 30 seconds or until it becomes cold or reaches a steady temperature before using water for drinking or cooking. If you are concerned about lead in your water, you may wish to have your water tested. Information on lead in drinking water, testing methods, and steps you can take to minimize exposure is available from the Safe Drinking Water Hotline or at <http://www.epa.gov/safewater/lead>.

Additional Information for Cryptosporidium

In March 2010, the Town of Wytheville began monitoring for Cryptosporidium in the source water (before treatment) as required by EPA's Long Term 2 Enhanced Surface Water Treatment Rule (LT2ESWTR). Cryptosporidium is a microscopic parasite found in surface water throughout the United States. Inges-

tion of Cryptosporidium may cause cryptosporidiosis, an abdominal infection. Although filtration removes Cryptosporidium, the most commonly-used filtration methods cannot guarantee 100 percent removal. Under the LT2ESWTR, the average Cryptosporidium concentration determines if additional treatment measures are needed. Twenty four samples are required for analysis over a two year period. During 2010, the average Cryptosporidium concentration was 0 oocysts per liter for the 10 samples collected. While our monitoring indicates the presence of these organisms in our source water (before treatment), the current test methods do not allow us to determine if the organisms are dead or if they are capable of causing disease. Based on the Cryptosporidium monitoring results so far and the consistent performance of the treatment plant, we anticipate surpassing any future treatment requirements of the LT2ESWTR.

VIOLATION INFORMATION

Your water system did not have MCL, TT, monitoring, reporting or other violations during 2010.

Town of Wytheville
PO Box 533
Wytheville, VA 24382

PRESRT STD
US POSTAGE

PAID
WYTHEVILLE, VA
PERMIT #128

BOXHOLDER

Wytheville Observer

Page 8 • April, May, June 2011 • www.wytheville.org

Calendar

April

- 11 – Town Council Meeting
- 14 – Planning Commission Meeting
- 15 – Town Decals Due
- 25 – Town Council Meeting
- 25-29 – Curbside Brush Pick Up

May

- 9 – Town Council Meeting
- 12 – Planning Commission
- 23 – Town Council Meeting
- 23-27 – Curbside Brush Pick Up
- 29 – Memorial Day Celebration
(Withers Park)
- 30 – Memorial Day Holiday
(Offices Closed)

June

- 9 – Planning Commission
- 13 – Town Council Meeting
- 27 – Town Council Meeting
- 27-7/1 – Curbside Brush Pick Up

Dig In & G•R•O•W

Perhaps you would like to grow your own fresh produce this summer, but do not have a location to do so. The Town of Wytheville has a solution! Become a part of Wytheville's Community Garden. Located on Cove Road near the elevated water tank, local citizens, for a nominal fee, can have access to a 10' x 20' plot of land where they can grow all sorts of summer vegetables and flowers. All maintenance of the garden plot area is the responsibility of the person renting the space. Spaces fill up quickly! Reserve your spot today by calling 223-3505. It's a great way to grow your own produce and interact with fellow gardeners.



Muster of the Wythe Grays

In 1861, a militia of ordinary citizens changed into an active military unit as a "muster" of the Wythe Grays transformed them into the 4th Virginia Infantry of Company A. It was the first formal military act of the Civil War for this area and now, 150 years later, it will be recreated to honor this important aspect of history as part of local efforts in the Sesquicentennial Celebration of the Civil War.



By definition, a "muster" is an assembling of troops or persons for battle, formal inspection, orders, or discharge. In June, a re-enactment of this muster will occur and the public will be able to see how this process took shape. The event will begin at daybreak on Saturday, June 4, on the grounds of the Homestead Museum, adjacent to the E. Lee Trinkle Regional Visitors Center on Tazewell Street. Throughout the day, until 8:00 p.m., a variety of activities will be demonstrated including drills and practices that would have taken place to "ready" the troops for battle. An especially interesting aspect will be the work done all day by the onsite company cook. Using basic food items that would have been available in the mid-1800's, he will prepare the troops' meals, an involved process for a hungry group of training men. The event will conclude on Sunday morning as the Wythe Grays march down Tazewell Street to the Courthouse where Mayor Trent Crewe will "swear in" the group for duty at 8:30 a.m.

The event is free, but donations will be appreciated to offset expenses. To enter the Homestead Museum area and view the activities, park at the Regional Visitors Center at 975 Tazewell Street, and follow the walkway. For more information, call 223-3330.



Wytheville Town Council

Trenton G. Crewe, Jr., Mayor
Jacqueline K. King, Vice-Mayor
H. Judson Lambert, Councilman
Jack Hunley, Councilman
Tommy Hundley, Councilman