



What is VLEPSC?
See related article page 5.



WPD Completes Third Accreditation Process

It's an ongoing process that never stops for the Wytheville Police Department (WPD), but the results of the latest evaluation in May prove that its standards of operation are remaining high and consistent.

In mid-May, the local agency completed the accreditation process for the third time. It was initially accredited in 2002, with re-accreditation occurring in 2006. While the assessment team conducts their evaluation over a three-day period, the true accreditation process is ongoing. This year's assessment group involved representatives from the Martinsville Police Department, Botetourt County Sheriff's Office, Wintergreen Police Department (the only private police department currently accredited in Virginia) and the Radford City Police Department.

The accreditation process addresses law enforcement issues in Administration, Operations, Personnel and Training. There are 187 standards with 541 bulleted issues for a total of 728 law enforcement issues addressed. Of these 728 issues only six were returned for corrections and all were considered minor. These standards cover all aspects of law enforcement operations – from the way patrol cars are marked to procedures involved in the investigation of all types of crimes. Accreditation is voluntary. Once an agency is certified, the process is required every four years.

SEE ACCREDITATION, Page 2

Located south of Wytheville just outside the town limits, the Crystal Springs Recreation Area was recently unveiled with a Grand Opening celebration. The recreation area consists of an 1,800 acre tract, owned by the Town of Wytheville. Originally a protected watershed, visitors are now welcome to utilize the property for hiking and picnicking. "Just as this watershed served our citizens for nearly a century with safe, pure water," said Jackie King, Wytheville Vice-Mayor, at the ceremony, "we hope that it will serve for nearly as many years as a safe and pure haven for enjoyment, exercise, and education."

Through a grant awarded by the Blue Ridge Parkway Foundation and the Wythe/Bland Community Foundation, trails were constructed that have some unique interactive opportunities. The trails are part of the Blue Ridge Parkway Foundation's initiative called "Kids in Parks" TRACK Trails Program. Brochures are available at the trail head sign that provide guests a self-guided opportunity to identify unique aspects of the trail such as a tree with Pileated Woodpecker holes or a raccoon track left in the mud. After their trail experience,



hikers can visit the TRACK Trails website (www.kidsinparks.com), answer a few questions about their experience, and earn valuable prizes.

During the opening festivities, held on July 31, Vice-Mayor King thanked those who worked to see this project completed including the Wythe-Bland Community Foundation, the Blue Ridge Parkway Foundation, the Town of Wytheville Public Works and Parks & Recreation Departments, Boy Scout Troup 197, and Girl Scout Troop 641.

For additional information about programs and guided hikes scheduled, check out the Parks & Recreation Department's Fall Program schedule or call 223-3378. Directions to Crystal Springs Recreation Area: Take route 21 south, 4 miles. Turn left onto Pump Hollow Road. Proceed 1 mile, parking on left.

MAYOR'S MEMO

by Mayor Trenton G. Crewe, Jr.



This long hot summer is almost behind us. It certainly has been a year of weather extremes. But, it has given our community an opportunity to enjoy many outdoor events including a great season for our After Hours Concert Series in Withers Park. It is wonderful to see these events, hosted by the Town's Parks & Recreation Department, continue to grow in attendance.

Speaking of recreation, we are also excited that the Crystal Springs Recreation Area is now open and being utilized by many. This beautiful area is the result of the hard work and cooperation of our Public Works and Recreation Departments. You can learn more about this project, and our other community partners, through an article concerning the grand opening event in this newsletter. We hope you take time this fall to enjoy these new recreation opportunities.

At the end of the last fiscal year in June, we were happy to learn that our local tourism efforts hit another milestone. For the first time since we imposed these taxes, the Town of Wytheville collected over \$3 million in meals and lodging taxes. Considering the very hard winter and its effect on travel, this is very welcomed news. Please remember that meals and lodging taxes, primarily paid by those who visit our community, greatly help offset real estate and personal property taxes. The reason we have over a two decade history of tourism marketing through the Town's Tourism Department (Wytheville Convention & Visitors Bureau), is to encourage more people each year to make our area the destination of their travel plans, enjoy the things to see and do, and leave their approval in the form of business revenue. We applaud the tourism businesses in Wytheville and Wythe County for being our partners in this effort and continuing to leave out the welcome mat of hospitality for which our area is known.

We hope as many citizens as possible will take advantage of the "Refuse to Be a Victim" seminars that the Wytheville Police Department will be offering this fall at the Wytheville Meeting Center. An article on Page 5 includes more information on how to take advantage of this free learning opportunity.

In July, we welcomed two new members to the Wytheville Town Council, Jack Hunley and Tommy Hundley. As some of you may remember, Jack previously served on Council several years ago. But, we also said goodbye to two gentlemen that have given decades of service. We will remember John Jones for his ability to recall in depth aspects of our budget and other financial matters and his work with our planning commission (on which he continues to serve). Bill Weisiger had the gift of making even the most angry or upset person feel at ease when they would come to us with an issue. We applaud their dedication and contribution to helping our community grow and prosper.

I note with sadness the death of long-time Town employee Carl "Duck" Linkous in a tragic accident this summer while mowing. He was a valued employee, wonderful person, and will be sorely missed by everyone. His family continues to be in our thoughts and prayers.

I welcome the opportunity to talk to you regarding your ideas and concerns. My office, at the Wytheville Municipal Building, is open prior to Council meetings on the second and fourth Monday evenings at 6:30 p.m., and other times by appointment. I can also be reached by phone at 223-3356 or via email at tcrewe@wytheville.org.

ACCREDITATION, Cont'd from Page 1

The assessment began with a static display of agency equipment, both emergency and standard, used by officers of the department and an agency tour. The process ended with an exit interview with the Chief of Police, his staff and the assessment team to discuss their findings regarding the assessment and to determine if the agency was in full compliance with the accreditation standards.

The Wytheville Police Department is one of 82 state accredited agencies out of 370 Law Enforcement agencies in Virginia. This represents less than 25% of possible agencies that have gone through this process to join this elite rank. Once the Virginia Law Enforcement Professional Standards Commission (VLEPSC) voted on the accredited status of the department, a re-accreditation plaque was presented to Chief Harry L. Ayers, the accreditation team and the Wytheville Police Department at the VLEPSC quarterly board meeting in Abingdon in June. The plaque was presented by the VLEPSC Board Chair Fred P. Newman, Sheriff of the Washington County Sheriff's Office.

The WPD's accreditation team includes Captain Rick Arnold, Lieutenant Joel Hash, and Sergeants Dewey Clemons and John Claypool. "This whole process would not have been possible without the hard work of the Wytheville Police Department who believe in what we do for the community of Wytheville," stated Captain Rick Arnold. "They are the ones that answer the calls and investigate the crimes, and make sure that it is done properly, every day, every time. I also want to take this opportunity to express my appreciation to the many people that became involved to help this process move smoothly and ensure that anything that was needed to prove a standard was made available. It was a tremendous effort on everyone's part. This was reflected in the fewest number of files returned by the assessment team for correction. In fact, there is only one other agency who has had a better assessment and that agency, the Salem City Sheriff's Office, received a '0' return of files, or 100% by their assessment team. That speaks volumes in how far this agency has progressed over the years."

Treasurer's TALLY

Taxes Due December 15

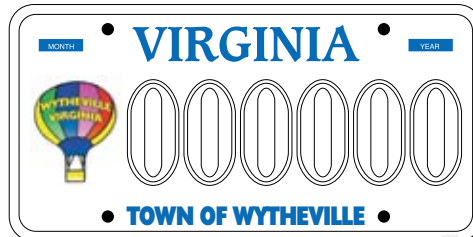
Tax tickets will be mailed around October 1, and all real estate and personal property taxes are due by December 15. It is your responsibility to pay taxes even if you do not receive a bill. If you have not received a tax bill by October 15, contact the Town of Wytheville Treasurer's Office immediately.

Trash Decal Renewal Comes in December

2011 Annual Trash Decals will go on sale December 1. Decals must be purchased by December 31 for use starting January, 2011. They may be purchased at the Treasurer's Office on Monroe Street or by mail. Name, address and payment may be mailed to P.O. Box 533, Wytheville,

For more information about any of the above subjects, call 223-3333.

VA, 24382. Decals are \$50 for one 32-gallon can or \$25 for one 13-gallon can. The decal should be displayed on the trash container or on a structure that is clearly visible to the trash collection crews.



Town Considers Special License Plate

Over the past few months, the Town of Wytheville has been working with the Virginia Department of Motor Vehicles to possibly create a special license plate. Shown above is an example of what it might look like. More information will be forthcoming in the next edition of this newsletter.



RFTW Embroidered Patch

Before the Run For The Wall riders departed this year, they were given a special embroidered patch to proudly wear on their vests or jackets. This special patch was created to honor the ten visits that the group has made to Wytheville. There are a few of these patches left. If you would like to purchase one to remember this special group, stop by the Treasurer's Office located in the Wytheville Municipal Building on Monroe Street. The patches can be purchased for \$10.

African American Heritage Museum Opens



In June, another phase of the mission of the Wytheville Training School Cultural Center became a reality with the opening of the African American Heritage Museum. Housed within the same building, the new museum brings a new opportunity for current and future generations to learn about this aspect of Southwest Virginia history. It is located at 410 East Franklin Street. Call 625-0042 for more information.



10th Anniversary DVD Now Available

Especially created to honor the tenth visit of Run For The Wall to Wytheville, a commemorative video is now available for purchase at The Museum Gift Shop. The video is part of the special temporary exhibit currently on display at the Thomas J. Boyd Museum.

The museum is open for tours Tuesday-Friday and the 3rd Saturday of the month from 10 a.m. – 5 p.m. (last tour at 3:30).

The Museum Shop is located within the Heritage Preservation Center. The DVD is \$15 (plus tax). To order by mail, send \$19 (includes tax, shipping & handling) to: The Museum Shop, 115 West Spiller Street, Wytheville, VA 24382.

For more information call 223-3330 or email at museum@wytheville.org.

H♦I♦S♦T♦O♦R♦Y

In The Making

The Creation of a Trail



"Mountain Crossroads," an update of the 2007 Wythe & Bland County Artisans Trails brochure, will soon be ready for distribution. This trail and publication follow a format set by the Southwest Virginia's Artisan Network - 'Round The Mountain (RTM).

The Wythe/Bland Artisans Trails project began with a planning grant funded by the Appalachian Regional Commission in 2005. Through community meetings, artisans were identified in Wythe and Bland Counties. After surveying these artisans, it was discovered that only a few actually had studios or workshops. Many of them were interested in a central location to sell their products. To develop these trails, the artisans' studios were highlighted and other points of interest were also shown. These included retail outlets that sell handmade products made locally, agricultural related sites such as wineries and orchards, natural resources and outdoor recreation sites, heritage and history sites and lodging and food businesses that are unique to the local communities.

During this time, 'Round The Mountain, a regional organization, was created

to develop a network of trails throughout Southwest Virginia. The Wythe & Bland Artisans Trails were chosen as the prototype and has served as a development model for other communities in the region.

The next step was to create and publish a brochure and map highlighting these trails. Grant funds were applied for and awarded from the Virginia Tourism Corporation Marketing Leverage Program. With support from the Town of Wytheville, RTM, and Wythe and Bland Counties, the trails became a reality with the publication of the full-color brochure in 2007.

The new brochure includes several updates and additions. While few in number, local artisans are rich in talent and the area boasts many natural resources and heritage sites. Agricultural related sites are on the increase with the addition of the Rural Retreat Winery & Dye's Vineyards, Wytheville Farmer's Market and Flying Flowers. Adding to the list of historical sites, two more museums are now open in Wytheville (Edith Bolling Wilson Birthplace Foundation & Museum and the African American Heritage Museum) and one museum is currently under construction

(the Great Lakes to Florida Highway Transportation Museum on Tazewell Street). Just recently, the Crystal Springs Recreation Area and TRACK Trail opened.

The future looks bright for this creative form of economic development. It is hoped that more talented local artisans will take that next step in the future and open up their own galleries and workshops. More agricultural related sites are also on the horizon including pick-your-own farms (Henley Mountain Berry Farm, a pick-your-own blueberry farm, is set to open Summer 2011).

Stop by the Heritage Preservation Center, the Regional Visitors Center or the Chamber of Commerce and pick up a "Mountain Crossroads" brochure. Then spend some time exploring the many sites featured. You will find one-of-a-kind treasures, beautiful scenery, attractions to interest the entire family, friendly folks, unique restaurants and some great music. For more information about the Artisans Trails program, call the Town of Wytheville Department of Museums at 223-3330.



Behind the Badge

Three New Officers on Patrol



In July, three new officers joined the Wytheville Police Department. They are shown in this photo being sworn in by Mayor Trent Crewe, from left to right: Todd S. Mathews, Kelly C. White, and Travis P. Coffey.

These new officers have a variety of background and experience. Mathews is a native of Wytheville. He served several years in the United States Marine Corp and, most recently, has been a deputy with the Wythe County Sheriff's Office. White is a native of Pulaski County. This will be his first law enforcement position since graduating from the police academy in New River last December. Coffey, also a Pulaski County native, graduated from the police academy in June and has been a member of the Virginia National Guard for six years.

By the Numbers...

WPD STATS

2nd Quarter Statistics for the Wytheville Police Department April through June 2010

CRIMINAL CHARGES FOR APRIL/MAY/JUNE 2010

Kidnapping	1
Sexual Type Assaults	3
Robbery	2
Assaults (Aggravated/Simple)	23
Burglary / B & E's	8
Thefts (All Types)	91
Motor Vehicle Thefts	2
Counterfeiting / Forgery	8
ID / Credit Card Thefts	8
Destruction / Vandalism Property	28
Drug / Equipment Violations	28
Statutory Rape	1
Weapons Violations	2
DUI / DUID	10
Drunk & Disorderly	59
Liquor Law Violations	5
Trespassing	8
All Other Offenses	65

Total Criminal Investigations and Offenses Initiated352

TRAFFIC CHARGES FOR APRIL/MAY/JUNE 2010

DUI/DUID Alcohol Violations	15	11
Speeding Violations	126	127
Safety Belt / Child Safety Seats	35	28
Stop Sign / Traffic Light / ROW	25	
Reckless Driving	3	6
Susp / Revoked	13	7
Texting	1	
Traffic Stops w/ Narcotics	8	
Littering	1	
All Other Violations	69	39

Total Traffic Charges This Quarter 295 219*

TOTAL Traffic Charges: 514

*219 Traffic charges during the two week special enforcement Clickit or Ticket campaign.

Total Warrants / Summons Served: 535

Total Patrol Officer Initiated Activity: 1049

MOTOR VEHICLE ACCIDENTS APRIL/MAY/JUNE 2010

	Major Damage	Minor Damage	Injuries	Fatalities
April	33	13	3	0
May	25	10	2	0
June	24	12	5	1
Totals	82	35	10	1



Thursday, Sept. 30 – 2 p.m. & 7 p.m. • Tuesday, Oct. 26 – 2 p.m. & 7 p.m.

Location: Wytheville Meeting Center

This two-hour course is geared toward awareness and prevention of criminal confrontations. It provides participants with information they can use to minimize their chances of criminal attack. This free class is conducted by the Wytheville Police Department.

What is VLEPSC?

The Virginia Law Enforcement Professional Standards Commission (VLEPSC) is made up of the Virginia Sheriffs' Association, the Virginia Association of Chiefs of Police and the Virginia Department of Criminal Justice Services (DCJS). Executive board members consisting of active Sheriffs and Chiefs of Police establish professional standards and administer the accreditation process by which Virginia agencies can be systematically measured, evaluated, and updated. DCJS manages the day-to-day operations for the commission.

The Commission's goals are to increase the effectiveness and efficiency of law enforcement agencies in the Commonwealth through the delivery of services; to promote cooperation among all components in the criminal justice system; to ensure the appropriate level of training for law enforcement personnel; and to promote public confidence in law enforcement.

Accreditation increases the law enforcement agency's ability to prevent and control crime through more effective and efficient delivery of law enforcement services to the community it serves. Accreditation enhances community understanding of the law enforcement agency and its role in the community as well as its goals and objectives. Citizen confidence in the policies and practices of the agency is increased. Accreditation, in conjunction with the philosophy of community policing, commits the agency to a broad range of programs (such as crime prevention) that directly benefit the public. Accreditation creates a forum in which police and citizens work together to control and prevent crime. This partnership will help citizens understand the challenges that confront law enforcement. Law enforcement will, in turn, receive clear direction from the community about its expectations. Thus, a common set of goals and objectives will be arrived at and implemented.



Choosing the final resting place for yourself or a loved one is a somber occasion. This is one reason why many persons prefer to make these arrangements in advance to ease the burden for others. As a service to their citizens, the Town of Wytheville offers several options for interment at West End Cemetery and Mausoleum.

In 1940, West End Cemetery was established on 23 acres of property located off of West Lee Highway. Later in 1957, the Town of Wytheville took over its operation and maintenance.

The cemetery is divided into eight sections with additional areas reserved for future development. Spaces range in price from \$330-\$465 and can be purchased individually or in groups of eight. Space fees can be paid in full at time of purchase or, with a minimum 20% deposit, the cost

can be financed for up to 12 months with no interest. A space must be paid for in full before it can be used.

In 1995, the West End Memorial Mausoleum was completed as part of the cemetery grounds with a total of 140 crypts and 28 urn niches. Seventy of the crypts, with marble fronts, are located within the chapel. Seventy garden crypts, with granite fronts, are located outside. The urn niches have granite fronts as well and are located on either side of the chapel. Crypts are sold in side-by-side or end-to-end pairs. Some single crypt spaces are also available.

Crypts range in cost from \$3,650-\$5,700. Urn niches are \$895-\$1195. As with the cemetery plots, these spaces must be paid in full prior to use. They can be financed with a 10% minimum deposit for up to 12 months. Costs include engraving

on the crypts or niches, however, an additional opening and closing fee (\$500-\$875) is incurred for the cemetery or mausoleum spaces at the time of use.

The Town of Wytheville also operates and maintains East End Cemetery on Peppers Ferry Road. In recent years, the Town has also taken over the maintenance of Oakwood Cemetery, also located off Peppers Ferry Road. There are currently no known spaces available in either of these two cemetery locations for purchase.

For more information regarding cemetery spaces, mausoleum crypts or niches, please contact the Town of Wytheville Treasurer's Office at 223-3333. The office is located within the Wytheville Municipal Building at 150 East Monroe Street. Email questions to Michael Stephens, Town Treasurer, at ttmikes@wytheville.org.

Ready
✓
virginia

Make Your Plan Now

September is National Preparedness Month

Ready
✓
virginia

Virginia residents have suffered through many disasters, including recent severe winter weather and extensive flooding. Emergencies motivate many to prepare ahead of time, but research shows that there is still plenty to do. Take these simple, low-cost steps to prepare and protect your family:

- **Make a family emergency plan.** Sit down as a family and plan in advance what

you will do in an emergency and how you will get in touch with each other. Write it down. Get a family emergency plan worksheet at www.ReadyVirginia.gov.

- **Choose an out-of-town emergency contact.** Choose an out-of-town relative or friend because families may not be together when an emergency happens. When an emergency happens, no matter where your family members are, they can

call the out-of-town contact and say they are OK.

- **Store a three-day supply of water.** The rule of thumb is to store one gallon of water per person per day. Don't forget three days of food per person as well.

Preparedness is everyone's responsibility. For more information, go to www.ReadyVirginia.gov.

BRUSH COLLECTION GUIDELINES

TOWN OF WYTHEVILLE, VIRGINIA

BRUSH PICKUP DATES FOR 2011

January 24-28
 February 21-25
 March 28-April 1
 April 25-29
 May 23-27
 June 27-July 1
 July 25-29

August 29-September 2
 September 26-30
 October 24-28
 November 28-December 2
 December 26-30

DATES TO REMEMBER

BRUSH COLLECTION GUIDELINES

- In order to avoid getting a citation, please do not have brush out earlier than 6:00 PM on the Friday before collection week.
- Do not place brush on water meters or sewer cleanouts.
- Do not place branches, grass clippings or leaves in the travel lane or block sidewalks.
- Any brush placed out after the scheduled collection time may not get picked up in a timely manner or may result in a fine/charge.
- Tree removals by a contractor for a homeowner are to be disposed of by the contractor.
- Vehicles should not be parked near the brush, as this blocks accessing the piles.
- The Town will not pick up old furniture, lumber, tires, or similar items. Disposal of these items are the responsibility of the owner or tenant.
- The brush disposal site is open Monday-Friday from 8 AM to 3 PM and the first and third Saturday of each month from 8 AM to 1 PM.

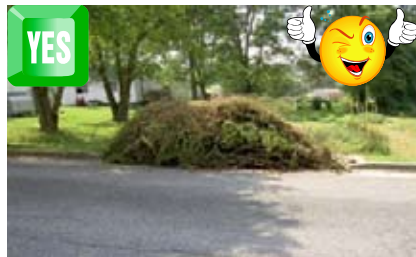
Few localities offer this type of free service. Your assistance in following the guidelines will ensure the service continues and is not abused. Please contact the Director of Public Works at 223-3357 with additional questions.



SORT LEAVES AND GRASS CLIPPINGS INTO SEPARATE PILES; GRASS CLIPPINGS MUST BE BAGGED OR IN CONTAINERS



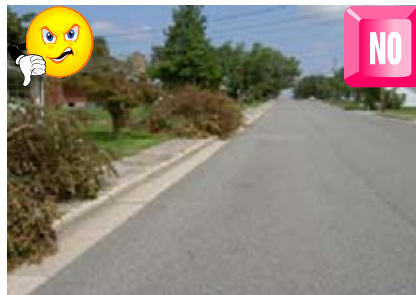
IN A VERY SMALL PILE, BRANCHES MAY BE IN DIFFERENT DIRECTIONS



ARRANGE ALL BRANCHES IN THE SAME DIRECTION PARALLEL TO STREET



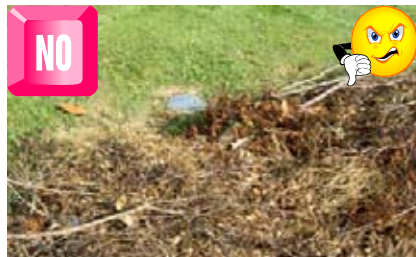
MORE THAN ONE DUMP TRUCK LOAD (10 FT. X 7 FT. X 4 FT.) PER HOUSEHOLD



DO NOT PLACE BRUSH, GRASS CLIPPINGS, OR LEAVES IN THE TRAVEL LANE OR BLOCK SIDEWALKS



DO NOT PUT ANY OTHER ITEMS IN THE BRUSH PILE



BRUSH SHOULD NOT BE ON WATER METERS OR SEWER CLEANOUTS OR AT FIRE HYDRANTS OR GUIDEWIRES



BRANCHES MUST FACE SAME DIRECTION, STACK LOGS SEPARATELY NO LARGER THAN 4 INCHES IN DIAMETER

Town of Wytheville
PO Box 533
Wytheville, VA 24382

PRESRT STD
US POSTAGE
PAID
WYTHEVILLE, VA
PERMIT #128

BOXHOLDER

Calendar

September

- 6 - Labor Day Holiday
(Offices closed)
- 9 - Planning Commission Meeting
- 13 - Town Council Meeting
- 27 - Town Council Meeting
- 27 - 10/1 - Curbside Brush Pick Up

October

- 11 - Town Council Meeting
- 14 - Planning Commission Meeting
- 25 - Town Council Meeting
- 25-29 - Curbside Brush Pick Up

November

- 8 - Town Council Meeting
- 11 - Veterans Day Holidays
(Offices closed)
- 16 - Planning Commission Meeting
- 22 - Town Council Meeting
- 25-26 - Thanksgiving Holidays
(Offices closed)
- 22-24 - Curbside Brush Pick Up

★★★★ **Veterans Day Ceremony** ★★★★★
Thursday, November 11, 2010 • 11:00 a.m.
★★★★ **Wytheville Meeting Center** ★★★★★



Wytheville Town Council
Trenton G. Crewe, Jr., Mayor
Jacqueline K. King, Vice-Mayor
H. Judson Lambert, Councilman
Jack Hunley, Councilman
Tommy Hundley, Councilman

First Thursdays *With History*

The eighth season of First Thursdays with History is about to get underway. This popular performance series is hosted by the Town of Wytheville Department of Museums at the Heritage Preservation Center. Excellent acoustics and reserved seating create a comfortable atmosphere in the upstairs Education Room as superb performers take the stage with music, stories and good humor.

The Museum Shop opens at 7 p.m. with the program beginning at 7:30 p.m. The Heritage Preservation Center is located at 115 West Spiller Street. Call 223-3330 for further details and to purchase tickets.



October 7, 2010 **Ralph Archbold of Philadelphia as BENJAMIN FRANKLIN**

Co-sponsored by Wytheville Woman's Club

More than 200 years after his death, the timeless wisdom of Benjamin Franklin lives through an award-winning, authentic portrayal of the famed author and inventor. Archbold, the official Ben Franklin for Philadelphia, the University of Pennsylvania, Freedom's Foundation and the Franklin Institute, has addressed over 10,000 audiences in a 30-year career.

After a winter break,
First Thursdays
will resume in March.

November 4, 2010

The Whitetop Mountain Band

A family-based band from the highest mountains of Virginia, the Whitetop Mountain Band originated with Albert Hash (well-known fiddler and luthier) in the 1940s. In the 1970s, Hash's brother-in-law, Thornton Spencer and his wife, Emily, joined him in the band. The current lineup includes the Spencers, their daughter Martha, Jackson Cunningham and Debbie Bramer. With deep roots in mountain music, the band's shows contain everything from fiddle/banjo instrumentals to powerful solos to four part mountain gospel songs, and, of course, flat foot dancing.



December 2, 2010

Bil Lepp

For 20 years, this award winning humorist, author and recording artist has been traveling the country sharing his hilarious tall tales with audiences of all ages. In his second visit to our stage, Lepp uses irony and observation to find the humor in topics ranging from growing up, hunting, politics and religion. He is the recipient of the 2010 Storytelling World Resource Award, the 2009 Parents' Choice Approved Award and five time champion in the West Virginia Liars Contest.